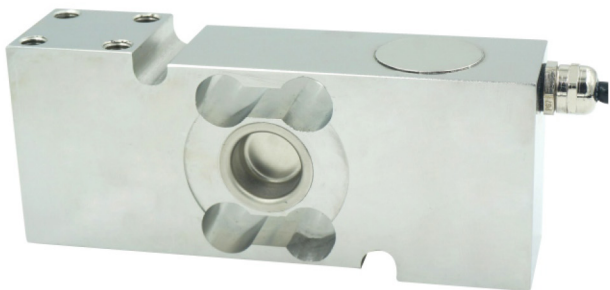




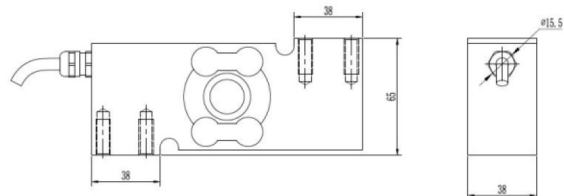
T722



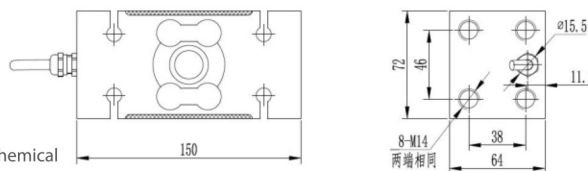
◆ 特点与用途/Features & Applications

- 不锈钢材质，稳定性强
- 综合灵敏度高，结构紧凑
- 四角偏差已补偿
- 长期稳定性好
- 主要用于不锈钢防水秤，化工防水制药等行业的过程称重系统
- Made of Stainless Steel, Strong stability
- Quadrilateral deviation compensated
- Good long-term stability
- It is mainly used in the process weighing system of stainless steel waterproof scale, chemical waterproof pharmaceutical industry, etc.

◆ 安装尺寸/Mounting Dimension



50~500kg

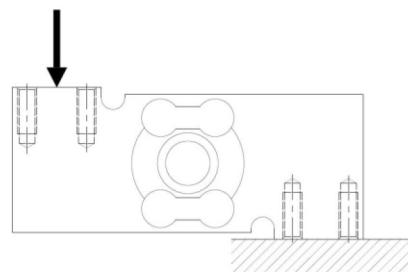


1000kg

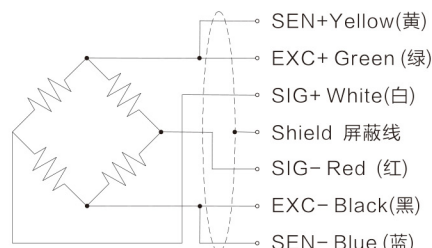
◆ 参数 Specifications 技术指标/Technique

参数	Specifications	技术指标/Technique
额定容量	Capacity	50,100,200,300,500,1000kg
输出灵敏度	Rated output	2.0 ± 0.002mV/V
零点输出	Zero balance	≤ 1%F.S.
非线性	Non-linearity	≤ 0.017%F.S.
滞后	Hysteresis	≤ 0.017% F.S.
重复性	Repeatability	≤ 0.01% F.S.
蠕变 (30min)	Creep(30min)	≤ 0.017% F.S.
温度灵敏度漂移	Temp.effect on output	≤ 0.002% F.S./10°C
零点温度漂移	Temp.effect on zero	≤ 0.002% F.S./10°C
输入电阻	Input impedance	380 ± 20Ω
输出电阻	Output impedance	350 ± 10Ω
绝缘电阻	Insulation	≥ 5000MΩ/100VDC
激励电压	Recommended excitation	5V
最大激励电压	Maximum excitation	15V
温度补偿范围	Compensated temp range	-10~40°C
工作温度范围	Operation temp range	-40~65°C
安全超载	Safe overload	150%F.S.
极限超载	Ultimate overload	300%F.S.
电缆线尺寸	Cable size	Φ6.3 × 2500mm
材料	Material	Stainless steel (不锈钢)
防护等级	IP Class	IP67
最大台面尺寸	Maximum mesa size	500 × 500mm, 600 × 800mm 800 × 1000mm
拧紧力矩	Tightening torque	30N.m 160N.m

◆ 受力方式/Load Direction



◆ 配线图/Wiring Code



新产品

压向传感器

拉压向传感器

压电力传感器

多维力传感器

称重传感器

张力传感器

螺纹力

扭矩传感器

其它定制力传感器

称重模块

仪表模块放大器